



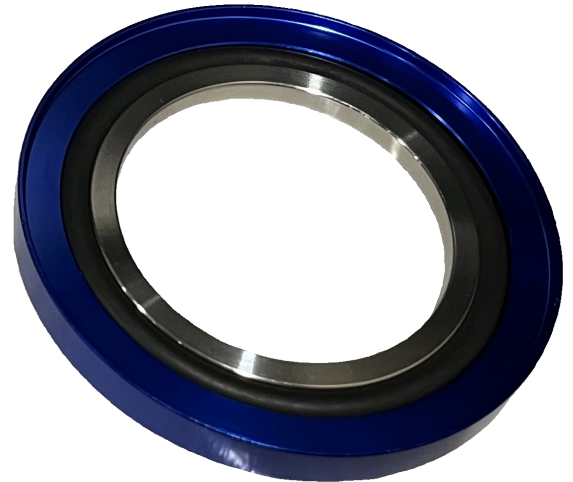
EKK's Subfab Solutions

Product Details

The ESF® Line of products are specifically designed for Semiconductor Sub-fab applications. Our ESF® Subfab Solutions are designed to fit your specific needs using our Superior® line of industry leading elastomers. Anodization available in many colors to distinguish use locations.

Applications

- ISO-KF vacuum fittings, KF12, KF25, KF40, etc.
- CVD, Etch , Diffusion or any downstream applications.
- O² and F chemistry resistant.
- Service temperatures from ambient to 320⁰ C



Features and Benefits

- High temperature capabilities
- Excellent Plasma Resistance
- FKM and FFKM options
- Retro fits existing KF/ISO seals



EKK EAGLE AMERICA INC.
Semicon Division

